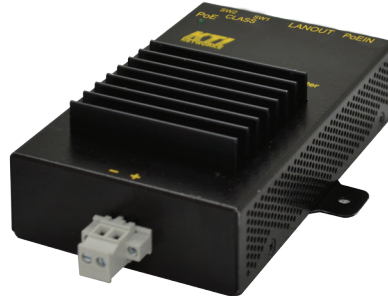




KPW-BTPD



Industrial IEEE 802.3bt Splitter and Power Converters

Product Highlights:

- IEEE 802.3bt compliance
- KTI PoE++ support
- Variety of model options
- Surge immunity up to 4KV

PoE Type 3 and Type 4 Power:

PoE		IEEE 802.3bt	
Type	Class	PSE *1	PD *2
3	5	45	40
3	6	60	51
4	7	75	62
4	8	90	71.3

PoE		KTI PoE++	
Type	Class	PSE *1	PD *2
3	5	50	39
3	6	74	53
4	7	90	70
4	8	128	90

* 1.The maximum output at the PSE end

* 2.The minimum input received at the PD end in the worst cast under maximal PSE output

KTI Network's KPW-BTPD is a state-of-art PoE splitter that integrates both the latest approved IEEE 802.3bt PoE standard and KTI PoE++ technology. It supports PoE incapable network device by just using a single twisted pair cable for both power and data transmission.

Further, the splitter has built-in a DC-DC power converter that converts the power input over network cable to a lower voltage output for local use. The splitter series has two voltage options, 12VDC and 24VDC and two power levels, 60W and 90W each for selection. The splitter is also equipped with DIP SW that allows user to select one from nine different classes for demanding power from a remote PoE switched port or mid-span injector. This feature can support efficient power management at the advanced PSE side.

For industrial applications, the splitters can support panel mounting and come with standard bracket for Din-Rail mounting. To enhance application safety, the splitters are featured short-circuit protection, low voltage lock out, inrush current limit, thermal protection and high surge immunity rating.

Key Features:

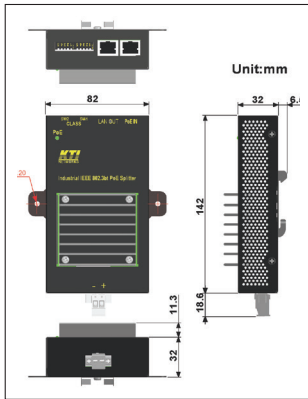
- IEEE 802.3bt, IEEE 802.3at and 802.3af PoE compliance
- Support KTI high power PoE++ PSE devices
- Support 10BASE-T, 100BASE-TX, and 1000BASE-T
- Support Alternative A or Alternative B PoE input over Cat.5/6
- Provide PD class selection SW for supporting power management at PSE side
- Embedded with isolated and high-efficient DC-DC power converter
- Protections: short circuit/over power/over current/over temperature
- High surge immunity up to 4KV

Specifications:

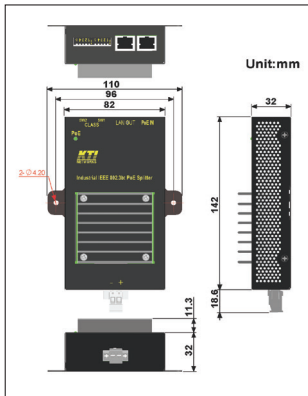
Standard	IEEE 802.3 10BASE-T, 100BASE-TX, 1000BASE-T
PoE In Jack	Shielded RJ-45 10BASE-T, 100BASE-TX, 1000BASE-T support Power pins – Pin1/2/3/6 and Pin4/5/7/8 (support both) LAN cable - Cat.5 or better
PoE Standard	IEEE 802.3af Type 1, IEEE 802.3at Type 2, IEEE 802.3bt Type 3 & 4
Power Class	Type 1 Class 0 ~ 3, Type 2 Class 4, Type 3 Class 5/6, Type 4 Class 7/8 (by DIP SW setting)
PoE Input Voltage	36 ~ 57VDC
LAN Out Jack	Shielded RJ-45 10BASE-T, 100BASE-TX, 1000BASE-T std. LAN cable - Cat.5 or better
DC Output	2P European Terminal block – DC+/DC-
DC Wire	12 ~ 22 AWG (1 meter max.)
LED Display	PoE input status



Din-rail Mount Dimension



Panel & Wall Mount Dimension



Related Products:

KTI PoE++ PSE Devices

KPOE-200
Industrial High-Power Single-Port
PoE++ Mid-span Injector

KGC-261-DP/I
IEC 61850-3 IEEE 1613 Managed
Media Converters with PoE

KGC-261-DP/G
Industrial Managed Media
Converters with PoE



Katron Technologies Inc.
15F-7, No. 79, Sec. 1, Hsin Tai Wu Rd.,
Hsi-chih District, New Taipei City, Taiwan
Tel: 886-2-2698-3878
Fax: 886-2-2698-3873
E-mail: ktj@ktinet.com.tw
URL: http://www.ktinet.com.tw

Trademarks: All brand names are trademarks or registered trademarks of their respective holders. This information is subject to change without prior notice.

Isolation	RJ-45 vs. DC OUT lines, RJ-45 vs. Frame ground, DC OUT lines vs. Frame ground
Protection	Auto-recovery for short circuit, OCP, OPP, OTP
Housing	Enclosed metal with no fan
Dimension	110 x 43.3 x 142 mm (LxWxH)
Mounting Support	DIN-Rail, Panel mounting
Environmental	Operating Temperature: -40°C ~ +70°C Storage Temperature: -40°C ~ +85°C Relative Humidity: 5% ~ 95% non-condensing

Derating	Model	Still air	Air flow 1m/s
	KPW-BTPD-12V60W	100% (45°C), 75% (55°C)	100% (50°C), 75% (60°C), 55% (70°C)
	KPW-BTPD-12V90W	80% (40°C), 60% (50°C)	100% (50°C), 80% (60°C), 60% (68°C)
	KPW-BTPD-24V60W	100% (40°C), 80% (50°C), 50% (70°C)	No derating
	KPW-BTPD-24V90W	80% (35°C), 60% (45°C)	100% (50°C), 80% (60°C), 60% (68°C)

Approval FCC Class A, CE Mark Class A, IEC60950-1 safety
IEC 60068-2-27 Shock, IEC 60068-2-64 Vibration

Ordering Information:

Model	PoE IN	DC OUT	
	Voltage Range	Voltage	Rated Watts*
KPW-BTPD-12V60W	44 ~ 57V	12VDC	60W max.
KPW-BTPD-12V90W	36 ~ 57V	12VDC	90W max.
KPW-BTPD-24V60W	44 ~ 57V	24VDC	60W max.
KPW-BTPD-24V90W	44 ~ 57V	24VDC	90W max.

* Connecting IEEE 802.3bt DC OUT max. = Rated Watts x 87%
* Connecting KTI PoE++ DC OUT max. = Rated Watts

Applications:

