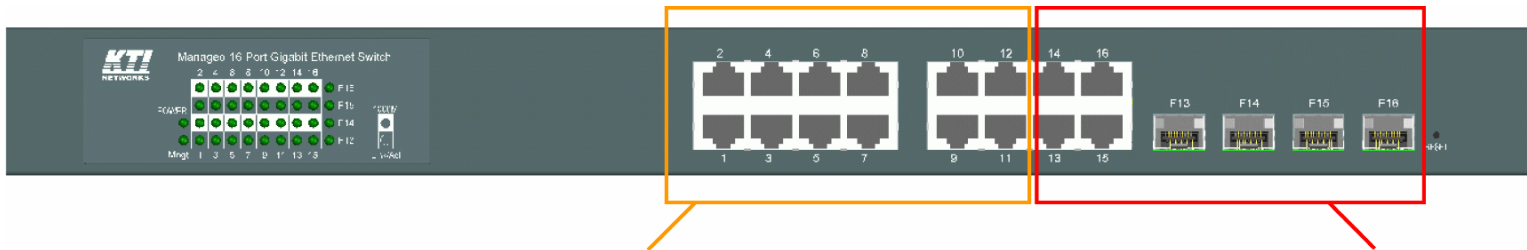


KGS-1620

*Managed 16-Port Gigabit Ethernet Switches
with 4 SFP slots*



Specifications



12 copper ports (10/100/1000M)

4 combo ports (RJ-45+1000M SFP)

- * **Web/Console/Telnet/SNMP managed**
- * **SSH/HTTPS Supports**
- * **802.1Q VLAN**
- * **802.1X access control**
- * **STP/RSTP/MSTP**
- * **QoS**
- * **ACL Configuration**
- * **IGMP snooping**
- * **Enhanced security**

Copper Ports

- 10/100/1000 Mbps RJ-45 support
- Auto-negotiation , Auto-MDI/MDI-X

Fiber Ports (combo with RJ-45)

- 1000 Mbps SFP support
- DDM support

Advantage 1: Combo with SFP



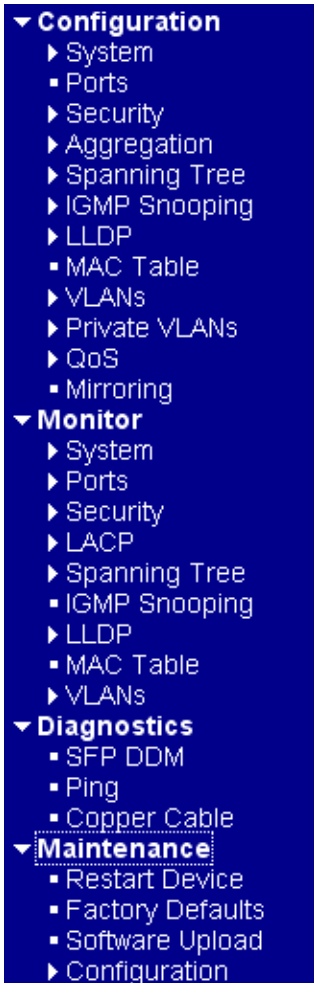
Combo

- Copper
- Fiber SFP

SFP Options

- Easy migration
- Easy upgrade
- Easy maintenance

Advantage 2: Powerful Management



- Web UI
- Telnet CLI
- Console CLI
- SNMP Interface
- HTTPS Supports
- SSH Supports

Advantage 3: Enhanced Security

- * System password
- * Authentication Method Configuration
Console, Telnet, SSH, Web
- * SSH Configuration
- * HTTPS Configuration
- * SNMPv3 Accesses Configuration
- * 802.1x Access Server Configuration
- * Access Control List

Advantage 4: Power Options

AC Power Input

KGS-1620-S :100~240 VAC, 50/60Hz



DC Power Input

KGS-1620-D :+40 ~ +72 VDC



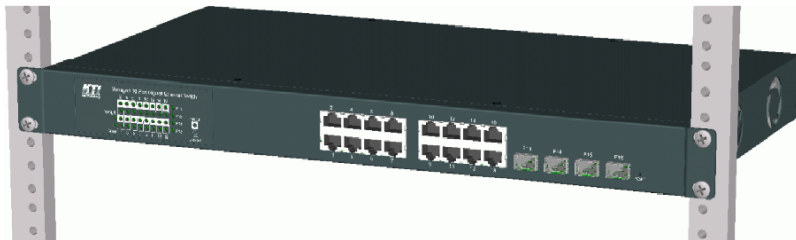
Benefit 1: SFP DDM Support

Information	SFP P	
	21	22
Identifier	SFP transceiver	Not Applicable
Connector	LC	Not Applicable
SONET Compliance	Not Applicable	Not Applicable
GbE Compliance	1000BASE-LX	Not Applicable
Vendor Name	APAC Opto	Not Applicable
Vendor OUI	000F99	Not Applicable
Temperature	29 (C)	Not Applicable
Voltage	3324 (mini V)	Not Applicable
TX Power	72 (micro W)	Not Applicable

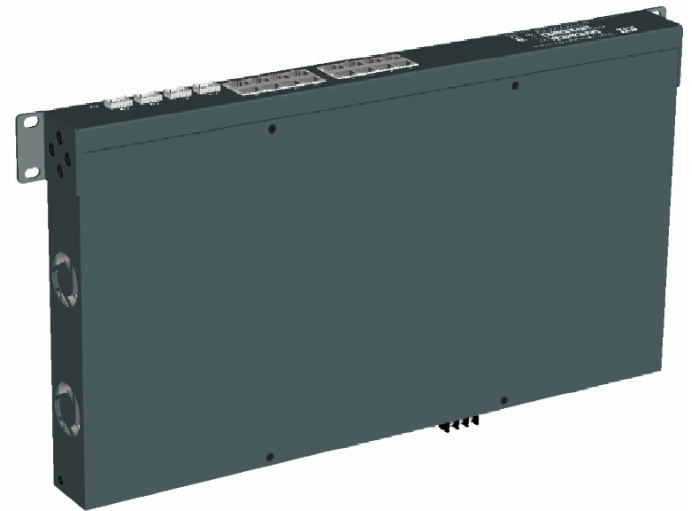
**Basic DDM Information
&
Real-time monitoring**
Operating temperature
Operating voltage
Optical Transmitting Power

Benefit 2: Mounting Flexibility

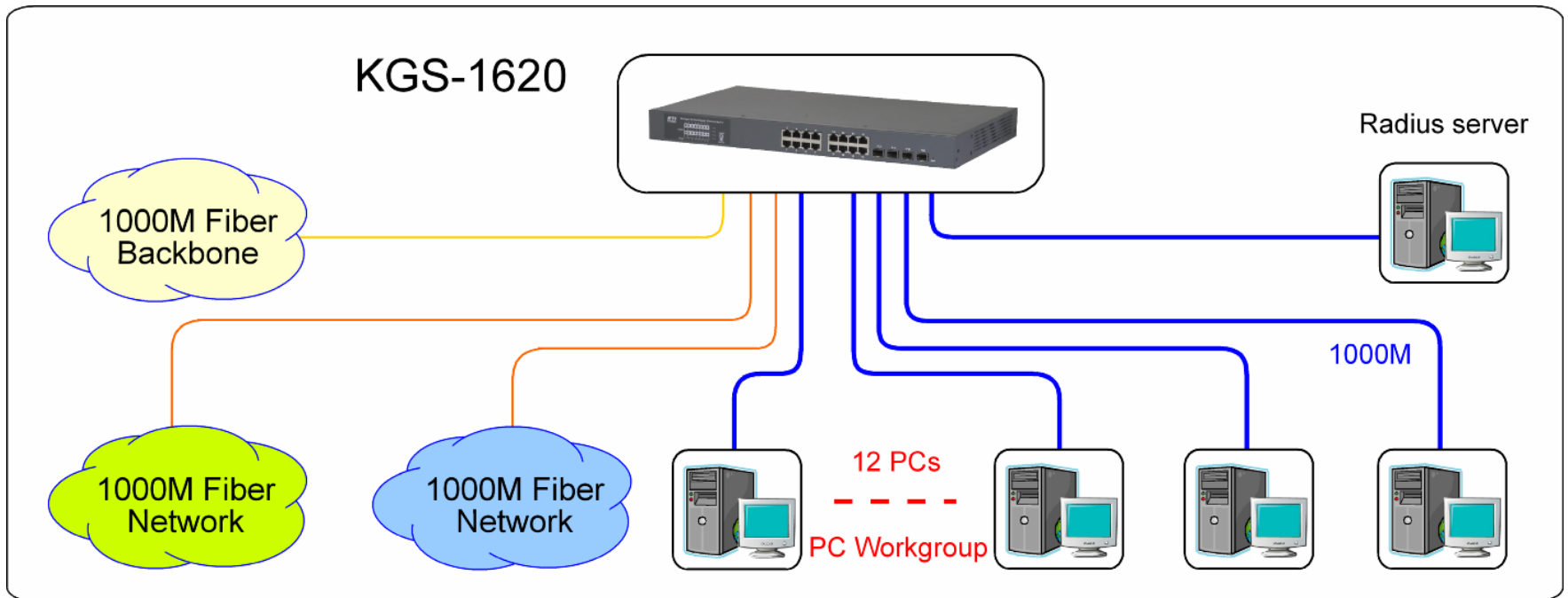
Industrial mounting



Wall mounting



Application 1: Workgroup Switch



Application 2: Edge Switch for VLAN

